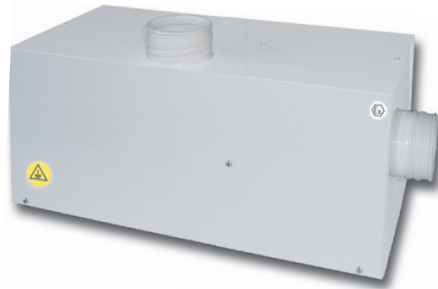


# RANGE V



## VENTILATION ATEX BOXES “ with Filtration Option ”



### CERTIFICATION

- **Model with ATEX airflow:** Electric fan with ATEX volute approved ATEX CE II 3/G.
- **Model with ATEX engine:** Electric fan with ATEX engine approved ATEX certified ATEX CE II 2/G EEx e IIB T4.
- **Model with ATEX airflow and engine block:** Electric fan with airflow approved ATEX CE II 3/G and engine block approved ATEX CE II 3/G and certified ATEX engine CE II 3/G EEx c IIB T3.

### ADVANTAGES

- Convenient for all safety cabinets.
- Easy and rapid installation, nice looking.
- Easy connection between the cabinet outlet and the box inlet.
- Connection by flexible tube diameter 100mm (in option).

### TECHNICAL CHARACTERISTICS

- Built in steel 12/10<sup>th</sup>.
- White epoxy paint RAL 9010.
- **Electric fan with ATEX airflow:**
  - 220-240 volts – 50 Hz – 12 W – 0,17 A – 47 dB(A) (excluding air flow).
  - Airflow: 80 m3/h – IP55 protection.
  - Inlet diameter: 100 mm / Outlet diameter: 100 mm.
- **Electric fan with ATEX engine:**
  - 220-240 volts – 50 Hz – 120 W – 1,07 A – 65 dB(A) (excluding air flow).
  - Airflow: 190 m3/h – Protection ATEX II 2/G EEx e IIB T4 protection.
  - Inlet diameter: 100 mm / Outlet diameter: 100 mm.
- **Electric fan with ATEX airflow and engine block:**
  - 380 volts phase- 50 Hz -180 W - 0,82/0,47 A 65 db (A) (excluding air flow).
  - Airflow: 200 m3/h - Volute protection: ATEX CE II 3/G, Engine protection : ATEX CE II 3/G EEx c IIBT3.
  - Inlet diameter: 100 mm / Outlet diameter: 100 mm.
  - Three-phase 16 A.

### FILTRATION OPTION WITH CHARCOAL FILTER

Our ATEX ventilation boxes may be equipped with an active charcoal filter. You may select it in the bottom of the file depending on the chemicals you will store in your safety cabinet. The adsorption capacity of charcoal filters is tested approved according the new NF X 15-211 may 2009 - Class 2 norm.



3 different charcoal filters are proposed:

- CDFORG Charcoal filter for organic vapors.
- CDFCORG “Universal”<sup>(1)</sup> charcoal filter for organic and corrosive vapors.
- CDFFOR charcoal filter for formaldehyde vapors

### CONNECTING KIT OPTION (KRC)

It allows to connect easily your ventilation or filtration box with any cabinet.

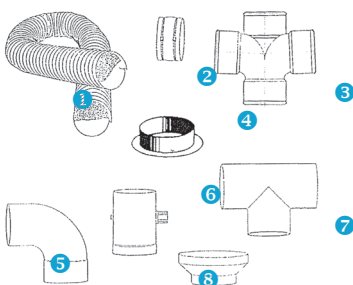
It includes :

- 1 sleeve diameter 100mm, ref CHJ, to fix on the exhaust of the cabinet.
- 1 meter of flexible tube diameter 100mm ref KL 100.
- 2 clamp diameter 100 mm, ref. CDS100.



P/N	Description	ATEX type	Voltage	Dimensions H x W x D (mm)	Weight (kg)
CVAT	Ventilation box with ATEX volute (without filtration option)	Volute	220 v mono	305 x 650 x 285	14
CMAT	Ventilation box with ATEX engine (without filtration option)	Engine	220 v mono		18
CTAT	Ventilation box with ATEX volute and engine (without filtration option)	Volute & Engine	380 v three phase		18
KRC	Connecting kit for box	-	-	-	1
① KL100	Flexible tube diameter 100mm, per meter	-	-	-	0,2
④ CHJ	Connecting sleeve diameter 100mm	-	-	-	0,1
CDS100	Clamp diameter 100mm	-	-	-	0,01
CDFORG	Active charcoal filter for organic vapors	<b>Filter must be changed at least once a year</b>			3
CDFCORG	“Universal” <sup>(1)</sup> charcoal filter for organic and corrosive vapors				3
CDFFOR	Active charcoal filter for formaldehyde vapors				3

### VENTILATION EQUIPMENTS



P/N	Description	Weight (kg)
② R100	Connecting sleeve diameter 100mm	0,5
③ RT188	PVC cross diam 100 mm	0,5
⑤ CT90	PVC elbow (90°) diam 100 mm	0,5
⑥ V125	Manual regulating PVC valve diam 125 mm	1
⑦ BT188	PVC T diam 100 mm (also available in Y, please contact-us)	0,5
⑧ ELE75	PVC reducer diam 100/75 mm	0,5
⑨ ELE39	PVC reducer diam 125/100 mm	0,5

<sup>(1)</sup> The latest generation «CORG» filter absorbs a large majority of chemicals commonly used in laboratories : organic and inorganic acids, solvents and organics.

The manufacturer reserves the right to discontinue or change specifications or designs at any time without notice and without incurring obligations. 03/2017

Flammable cabinets

Corrosive cabinets

Toxic cabinets and multirisk

Pesticide range

Fume hoods, filtering cabinets - Ventilation

Containment and Cans

Anti-fire equipments and File cabinets

Showers and first-aid equipments