

# MicroMax® NS

Serged Seams

Dry Particulate

Light Liquid Splash



## Microporous protection from dirt, grease, grime and light chemical splash!

This line of general purpose protective clothing can be used in work environments where hazardous or non-hazardous contaminants may be present. Very economical and lightweight, MicroMax® NS features high MVTR and is breathable for worker comfort. MicroMax® NS is strong, wet or dry, perfect for work environments where dirt, grime, splashes and spills are present.

### MicroMax® NS Physical Properties

Physical Property	Test Method	Units	Test Results
Basis Weight	ASTM D3776	oz/y <sup>2</sup>	1.55 oz/y <sup>2</sup>
Grab Tensile MD	ASTM D5034	lbs.	22.0 lbs.
Grab Tensile XD	ASTM D5034	lbs.	14.0 lbs.
Trapezoidal Tear MD	ASTM D1117	lbs.	9.0 lbs.
Trapezoidal Tear CD	ASTM D1117	lbs.	5.8 lbs.
Ball Burst	ASTM D3787	lbs.	19.0 lbs.
Air Permeability	ASTM D737	cfm	<0.562 cfm/ft <sup>2</sup>
Surface Resistivity	EN1149-5:2006	Ω	Pass

### MicroMax® NS ASTM F903 Penetration Data

Chemical Tested	Concentration %	Test Time – Minutes	Test Results
Diazinon	100%	60	Pass
Motor Oil-40 wt.	100%	60	Pass
Bleach-household	100%	60	Pass
Isocyanate Based Paint	100%	60	Pass
Sodium Hydroxide	50%	60	Pass
Sodium Hyperchlorite	10%	60	Pass
Blood	Challenge Fluid Liter – 3.20 x 10 <sup>8</sup> (PFU/mL)	Assay Results PFU/mL <1	Pass



800-645-9291 | 256-350-3873

Email: [info@lakeland.com](mailto:info@lakeland.com)

[www.lakeland.com](http://www.lakeland.com)



**Labcoat  
CTL101**

- Snap closure
- 2 pockets
- Long sleeve

**Sizes: S – 5X**  
**Case Pack: 30**



**Labcoat  
CTL104**

- Snap closure
- 2 pockets
- Long sleeve
- Elastic wrists

**Sizes: S – 5X**  
**Case Pack: 30**



**Labcoat  
CTL112**

- Snap closure
- No pockets
- Long sleeve
- Elastic wrists

**Sizes: S – 5X**  
**Case Pack: 30**



**Labcoat  
CTL140**

- Snap closure
- No pockets
- Long sleeves

**Sizes: S – 5X**  
**Case Pack: 30**



**Frock  
CTL190**

- Mandarin collar
- 5 snaps
- No pockets
- Elastic wrists

**Sizes: S – 5X**  
**Case Pack: 30**



**Frock  
CTL191**

- Mandarin collar
- Zipper closure
- No pockets
- Elastic wrists

**Sizes: S – 5X**  
**Case Pack: 25**



**Shirt  
CTL201**

- Snap closure
- Long sleeves

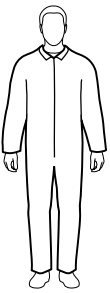
**Sizes: S – 5X**  
**Case Pack: 50**



**Pants  
CTL301**

- Elastic waist

**Sizes: S – 5X**  
**Case Pack: 50**



**Coverall  
CTL412**

- Zipper closure

**Sizes: S – 5X**  
**Case Pack: 25**



**Coverall  
CTL414**

- Zipper closure
- Attached hood
- Boots
- Elastic wrists

**Sizes: S – 5X**  
**Case Pack: 25**



**Coverall  
CTL417**

- Zipper closure
- Elastic wrists
- Elastic ankles

**Sizes: S – 5X**  
**Case Pack: 25**



**Coverall  
CTL428**

- Zipper closure
- Attached hood
- Elastic wrists
- Elastic ankles

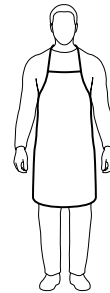
**Sizes: S – 5X**  
**Case Pack: 25**



**Smock  
CTL501**

- Long sleeves
- Attached ties

**Sizes: S – 5X**  
**Case Pack: 50**



**Apron  
CTL601**

- Sewn ties

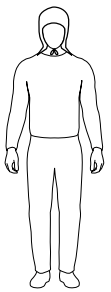
**Sizes: 28" w x 36" l**  
**Case Pack: 100**



**Apron  
CTL603**

- Sewn ties

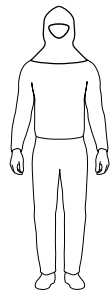
**Sizes: 28" w x 44" l**  
**Case Pack: 100**



**Hood  
CTL701**

- Drawstring closure

**One size**  
**Case Pack: 250**



**Hood  
CTL713**

- Elastic face
- Covers shoulders

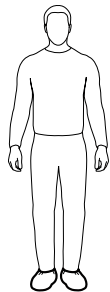
**One size**  
**Case Pack: 250**



**Sleeve  
CTL850**

- Elastic ends

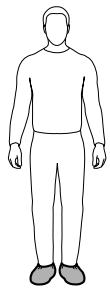
**Sizes: 18" length**  
**Case Pack: 100 pair**



**Shoe Cover  
CTL901  
901NS (non-skid)**

- Elastic ankles
- Style 901 – standard version
- Style 901NS – gray non-skid version

**Sizes: S/M, L/XL, 2X**  
**Case Pack: 200 pair**



**Boot Cover  
CTL903  
903NS (non-skid)**

- Elastic top
- 17" high
- Style 903 – standard version
- Style 903NS – gray non-skid version

**Sizes: S/M, L/XL, 2X**  
**Case Pack: 200 pair**



**Shoe Cover  
CTL904**

- Vinyl sole

**Sizes: S/M, L/XL, 2X**  
**Case Pack: 200 pair**



**Boot Cover  
CTL905**

- Elastic top
- 17" high
- Vinyl sole

**Sizes: S/M, L/XL, 2X**  
**Case Pack: 200 pair**

